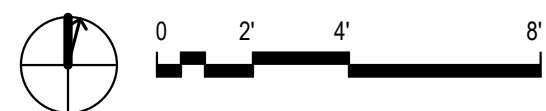


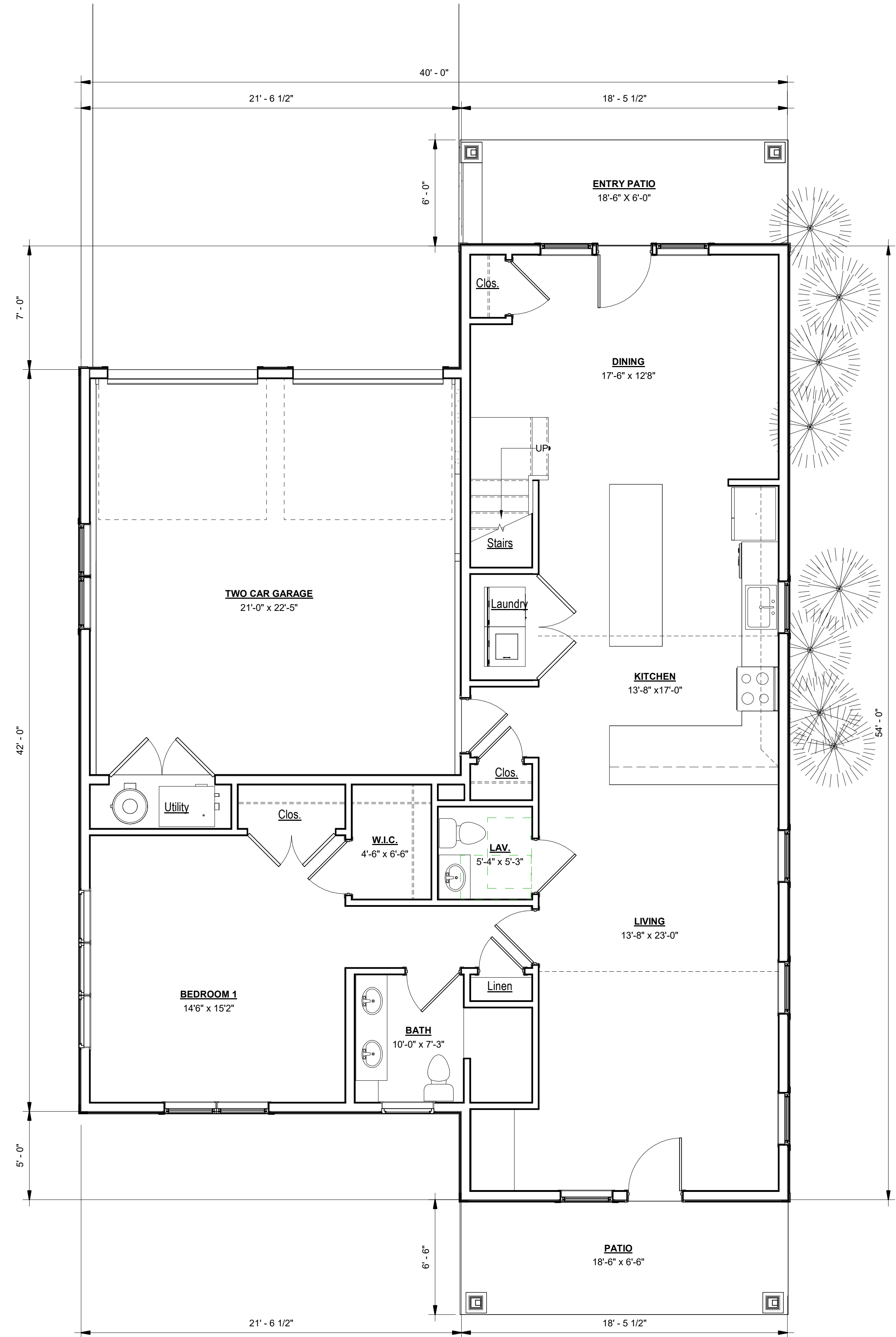
2 SECOND FLOOR
1/4" = 1'-0"



SQUARE FOOT TALLY (Net)*

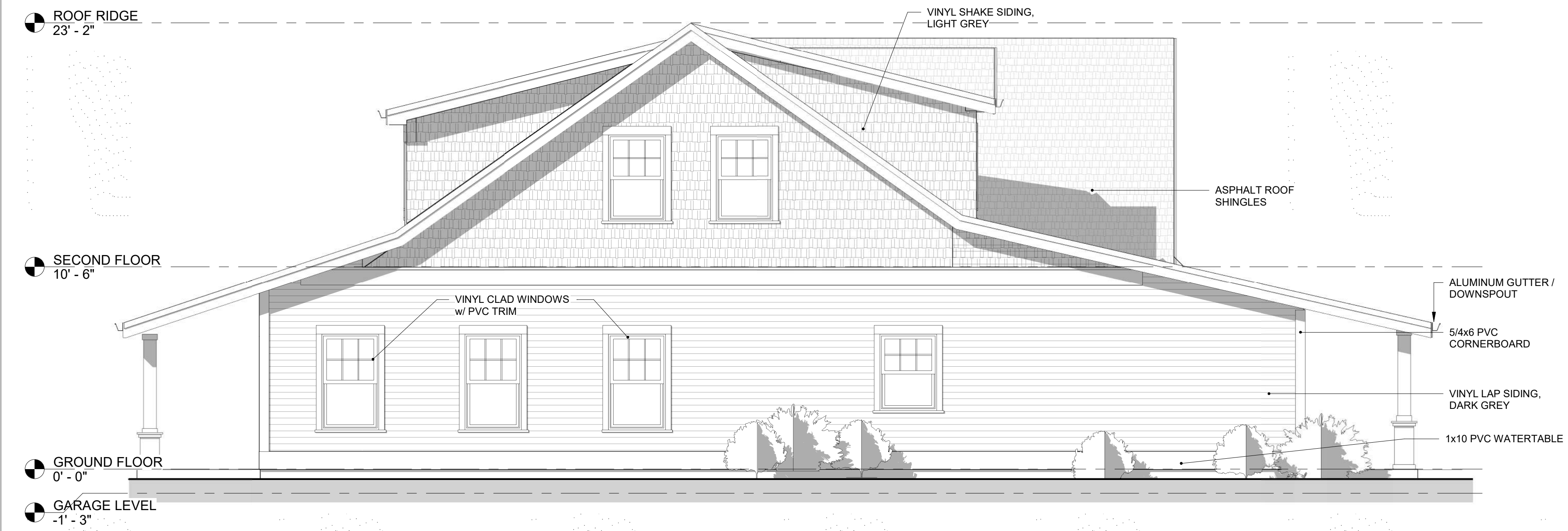
FIRST FLOOR	1,288 nsf
SECOND FLOOR	722 nsf
TOTAL =	2,010 nsf

* Net SF is measured at interior wall finish and does not include garage or unfinished spaces.



1 GROUND FLOOR
1/4" = 1'-0"

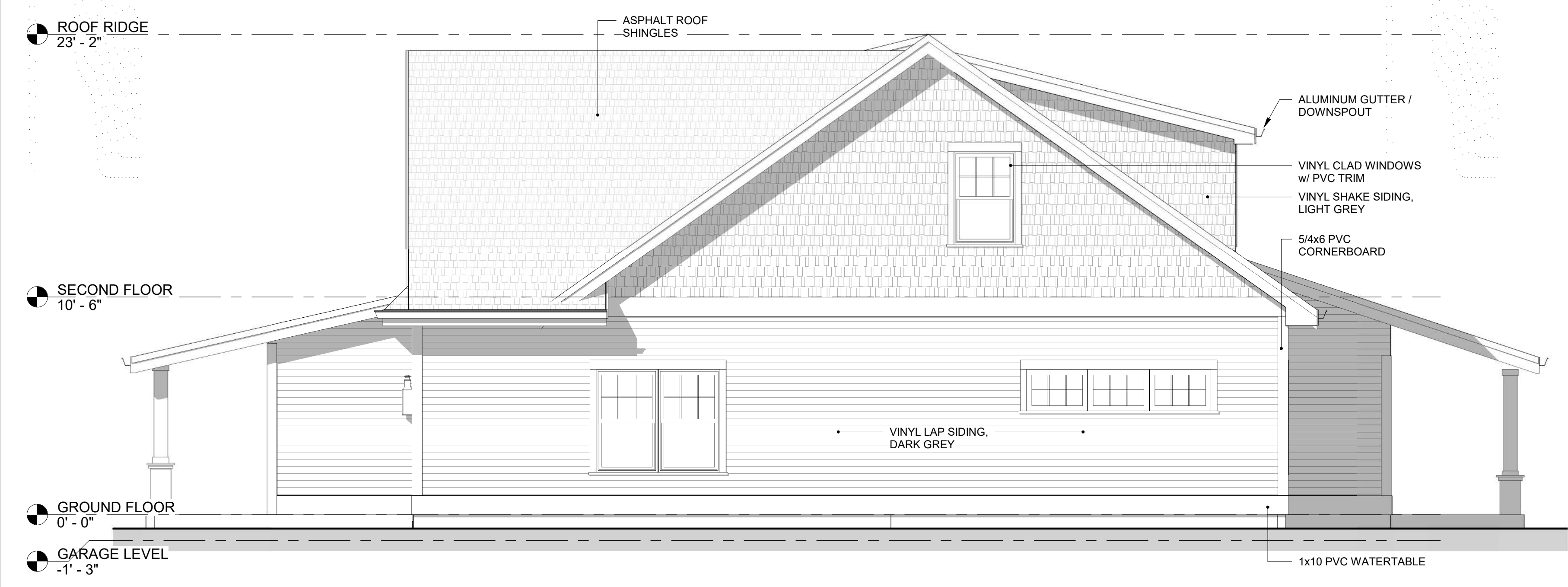




4 RIGHT SIDE ELEVATION
1/4" = 1'-0"



3 ELEVATION FACING GREEN SPACE
1/4" = 1'-0"



2 LEFT SIDE ELEVATION
1/4" = 1'-0"



1 ELEVATION FACING RING ROAD
1/4" = 1'-0"